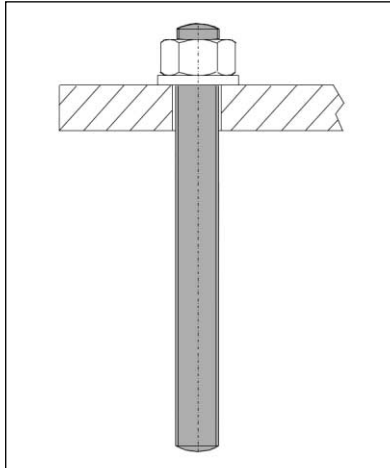
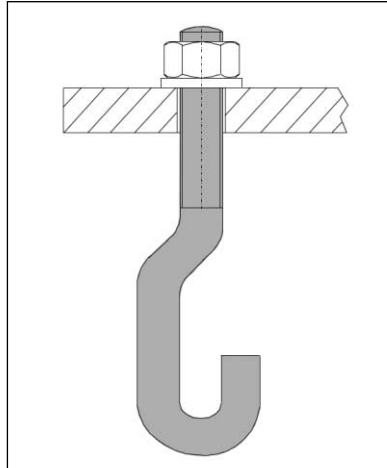


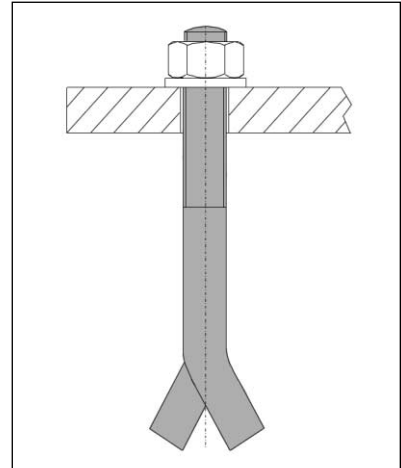
The most common types :



Gewindeanker
DIN 976



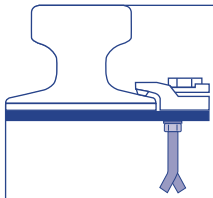
Hakenanker
DIN 529 B



Spreizanker
DIN 529 C

Anchoring acc. to DIN Steel grade 4.6	Length	Length in GANTREX® pre-casting grout	Thread
DIN 976	200	160	M16
	250	200	M20
	300	250	M24
DIN 529 B	200	160	M16
	250	200	M20
	300	250	M24
DIN 529 C	200	160	M16
	250	200	M20
	300	250	M24

For other shapes, please consult us.

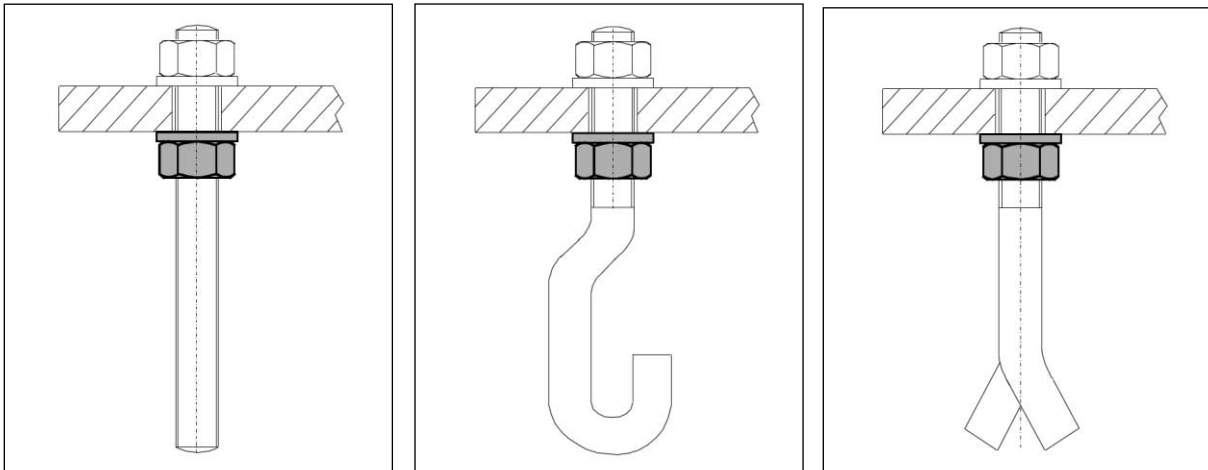


LEVELLING DEVICE



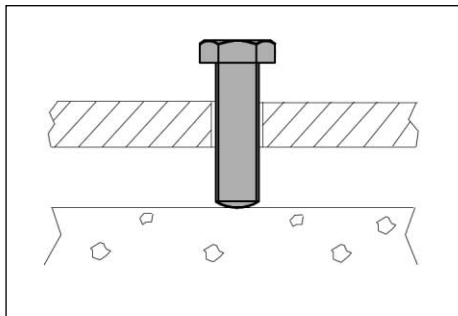
The most common types :

NUT + WASHER



Commonly used in 3 standard sizes (M16, M20 and M24) :
synthetic washer similar to DIN 125 on metal nut DIN 934.

LEVELLING SCREW



For other systems, please consult us.

*We reserve the right to discontinue or change specifications or design at any time without prior notice
and without incurring any obligation whatsoever.*

Darusin

Hungary, 2400 Dunaujváros, Neumann J. u. 16 • Tel: +36 25 503 930 • Fax: +36 25 503 931
E-mail: darusin@darusin.hu • webpage: www.darusin.hu